

Air Compressor D&B-CP Series



This catalogue is made as a part of Integrated Consulting Business Supports of Gwangju Patent information supported by Korean Intellectual Patent Office(KIPO) & Gwangju City



HANJIN D&B
Drilling Equipments Co., Ltd.

Distributed by

- 49, Hanamsandan 10-Ro, Gwangsan-Gu, Gwangju, Republic of Korea
- TEL_ +82-62-953-4525 • FAX_ +82-62-953-4520
- E-mail_ mail@hanjindnb.com
- Website_ www.hanjindnb.com



Air Compressor D&B-CP Series

- Dynamic Compressed Air
- Guarantee of Quality
- Variable capacity



www.hanjindnb.com

HANJIN D&B History

2012'

Business & Technology

- 1) New Lanching of CBM Drilling Rig-Model D&B-45
- 2) New Development of Sonic Drilling Rig
- 3) New Lanching of Water Hammer Drilling Solution
- 4) New Development of Rotary Blasthole Drilling Rig
- 5) New Development of Deep Hole Drilling Rig (Pull back 250ton)-Model D&B-250

Exhibition

INTERMAT2012 (Paris, France) – April 2012
Minexpo2012 (Las Vegas, U.S.A.) – September 2012
CTT 2012 (Moscow, Russia) – May 2012
Electra Mining Africa 2012 (Johannesburg, South Africa) – September 2012

Expansion

Open Philippines Branch
Open Drilling Services International, Inc. affiliated by Hanjin D&B & Energy Holdings Group
Open HanjinD&B Australia Branch
Open New Factory & Office Building

Exhibition

Conexpo-Con/Agg 2011 (U.S.A)
Izmir Mining Show 2011 (Turkey)
Geothermal Show 2011 (UK)
AIMEX 2011 (Sydney, Australia)

Business

About 60 production models.
USD50,000,000(Turnover) over 70 countries.

Technology Water hammer, SONIC Drill, Exploration Drilling rigs, etc.

Exhibition

BAUMA2010 (Munich, Germany)
Mining Show (South Africa)
GME 2011 (Kalgoorlie, Australia)

2011'

2010'

2009'

2008'

2007'

2006'

2004'

2003'

2002'

2001'

2000'

1997'

1991'

~1996'

1990'

1988'

Business

Acquired INNO-BIZ
Contracting DulannUul drilling Project in GOBI desert, Mongolia
(Jun. 2006~Nov. 2007, Total 35,000m HQ drilling for Uranium mine)

Exhibition INTERMAT2006 (Paris, France)

Business

Incorporation of going business to HANJIN D&B Co., Ltd.
ISO 9001 approved
CE Certificate approved

Technology The First development of HANJIN Water hammer & system (4", 5", 6", 8")

Exhibition BAUMA2004 (Munich, Germany)

Technology Development of high pressure air compressor (350psi/1070CFM)

Exhibition INTERMAT2003 (Paris, France)

Technology Development & production of Deephole drilling rigs (P9000, P9000S)

Exhibition

BAUMA2001 (Munich, Germany)
Ground Expo 2001 (USA)

Exhibition

Project Lebanon 2000

Business

Production of Geological survey drilling rigs (P4000SD, P6000SD)

Business

Production of 230 drilling machines (5 models)

Business

Production of Waterwell drilling rig & related products

Business

Foundation of JUNG MIL Precision Hydraulic Company.



Why D&B Air Compressor?

- Best solution for Drilling site
- Economical & Efficient Drilling solution
- Easy maintenance system
- Special & Unique designed control system

D&B-CP Series

D&B-980/1070CP(Self-loading)



- 1236CFM/362PSI
- 540HP/1800rpm
- Crawler
- Self-loading type

D&B-980/1070CP(Crawler)



- 1236CFM/362PSI
- 540HP/1800rpm
- Crawler type
- Wireless remote travel control

D&B-980/1070CP(Box)



- 1236CFM/362PSI
- 540HP/1800rpm
- Box type
- Low noise

D&B-980/1070CP(Wheel)



- 1236CFM/362PSI
- 540HP/1800rpm
- Wheel type
- Easy to transport

D&B-Double Compressor



- 2472CFM/362PSI
- Double Engine
- Double Air end
- Wireless remote travel control

D&B-980/1070CP(Truck Mounted)



- 1236CFM/362PSI
- 540HP/1800rpm
- Truck mounted type

Key Component

Engine



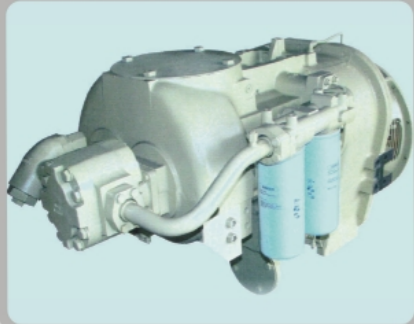
- HYUNDAI D6CC
- 540HP/1800RPM
- Direct Injection
- EURO 4 Engine

Air End(Elgi)



- 1150CFM/350PSI
- Capacity control
- Durability

Air End(HR2.0 / HR2.5)



- 953CFM / 1236CFM / 362 PSI

Self-loading & Crawler



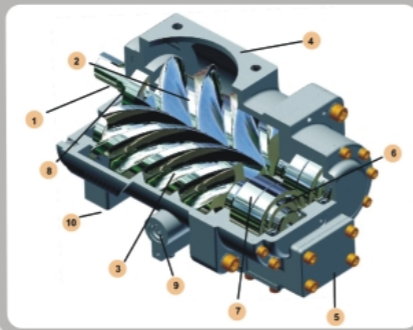
- 4Jack & 4outriggers
- Easy to load on truck
- Option
- Doosan Solar55
- Steel Track
- Easy to transport

Precision



- The Best design
- Reduced leakage
- Quality guarantee

Durable gear



- Direct drive system
- Low noise
- Good Durability

Remote control



- Remote control system
- Easy to transport
- Option

Control



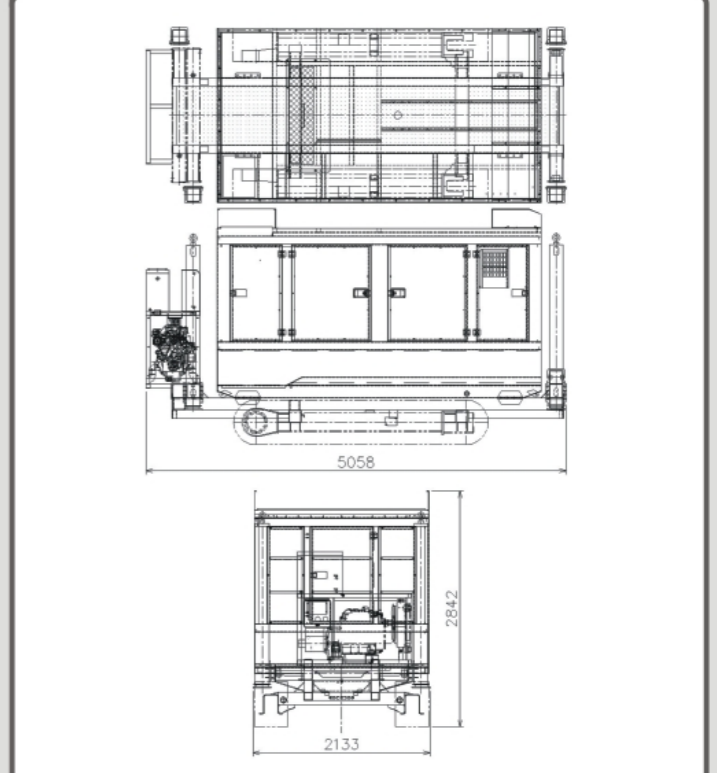
- Concentration
- Easy to control
- Easy to maintenance

Dimensions

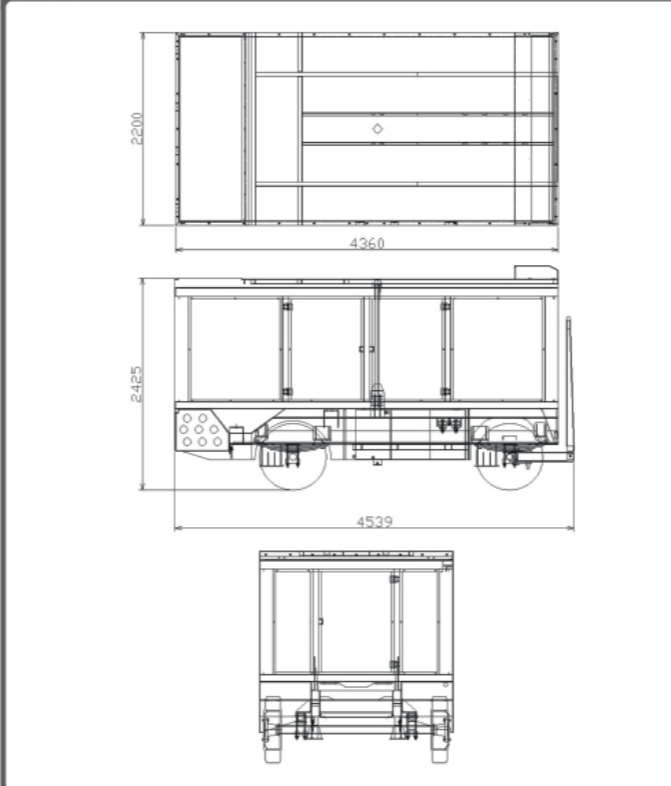
Box



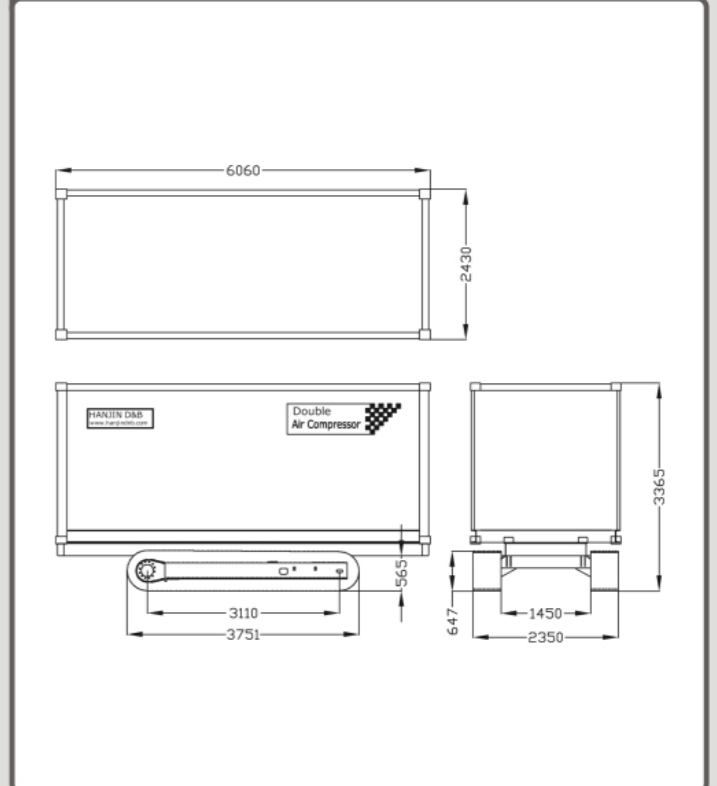
Crawler & Self-loading



Wheel



Double Compressor



		D&B Box	D&B Wheel	D&B Crawler
DIMENSIONS & WEIGHT				
OA length-transport	m	4.6	4.6	6
OA width	m	2.2	2.1	2.2
OA height-transport	m	2.4	2.1	2.9
Weight	ton	7	6.8	10
ENGINE				
Model(Diesel engine)		HYUNDAI D6CC	HYUNDAI D6CC	HYUNDAI D6CC
Injection type		Indirect injection	Direct injection	Indirect injection
DisPlacement	cc	12,344	12,344	12,344
Fuel tank capacity	ℓ	1100	1100	1100
Fuel consumption	g/ps.h	145	145	145
Cooling system		Water cooling	Water cooling	Water cooling
Battery capacity	ah	200	200	200
Battery quantity	ea	2	2	2
COMPRESSOR				
Model		D&B-980/1070CP	D&B-980/1070CP	D&B-CR COMP
Air-and		ELGI 20/12S(TWO STAGE SCREW) /HR-2.0/HR-2.5	ELGI 20/12S(TWO STAGE SCREW) /HR-2.0/HR-2.5	ELGI 20/12S(TWO STAGE SCREW) /HR-2.0/HR-2.5
Capacity(RPM)	cfm	980 / 1070	980 / 1070	980 / 1070
Capacity(PSI)	psi(kg/cm ²)	350psi(24.5kg/cm ²)	362psi(27kg/cm ²)	362psi(35kg/cm ²)
Coupling model		TDS/27	TDS/27	TDS/27
Fly wheel	sea	1	1	1
Dia. Od fan	mm	1200	1200	1200
Oil cooling system		Air cooling	Air cooling	Air cooling
Oil filtering	ℓ	100	100	100
Air outlet temperature	°C	75~85	75~85	75~85
Air outlet size		3 inch 1ea	3 inch 1ea	3 inch 1ea
CRAWLER(Truck) ENGINE				
Model (Diesel engine)		-	-	Daedong 34HP
Injection type		-	-	Indirect injection
DisPlacement	cc	-	-	3907
Fuel tank capacity	ℓ	-	-	88
Fuel consumption	g/ps.h	-	-	154
Cooling system		-	-	Water cooling
Battery capacity	ah	-	-	100
Battery quantity	ea	-	-	2
CRAWLER BASE				
Crawler type		-	-	Solar 055
Crawler speed	km/h	-	-	2.5
Ground pressure	kg/cm ²	-	-	0.5
Ground clearance	mm	-	-	400
WHEEL TYPE				
Cardinality	ea	-	-	-
OPTION				
900CFM / 350PSI, 980CFM / 350PSI 1070CFM / 350PSI, 1150CFM / 350PSI *The truck is different according to the vehicle which the consumer wants. *The crawler engine is according to situation could be changed.				

		D&B self-loading	D&B Truck mounted	D&B Double Comp.
DIMENSIONS & WEIGHT				
OA length-transport	m	4.8	6.8	6
OA width	m	2.2	2.4	2.4
OA height-transport	m	2.6	3.3	3.4
Weight	ton	10	10	12
ENGINE				
Model(Diesel engine)		HYUNDAI D6CC	HYUNDAI D6CC	HYUNDAI D6CC
Injection type		Indirect injection	Direct injection	Indirect injection
DisPlacement	cc	12,344	12,344	12,344
Fuel tank capacity	ℓ	1100	1100	1100
Fuel consumption	g/ps.h	145	145	145
Cooling system		Water cooling	Water cooling	Water cooling
Battery capacity	ah	200	200	200
Battery quantity	ea	2	2	2
COMPRESSOR				
Model		D&B-980/1070CP	D&B-980/1070CP	D&B-CR COMP
Air-and		ELGI 20/12S(TWO STAGE SCREW) /HR-2.0/HR-2.5	ELGI 20/12S(TWO STAGE SCREW) /HR-2.0/HR-2.5	ELGI 20/12S(TWO STAGE SCREW) /HR-2.0/HR-2.5
Capacity(RPM)	cfm	980/1070	980/1070	980/1070
Capacity(PSI)	psi(kg/cm ²)	350(24.5) / 362(27) / 362(35)	350(24.5) / 362(27) / 362(35)	350(24.5) / 362(27) / 362(35)
Coupling model		TDS/27	TDS/27	TDS/27
Fly wheel	sea	1	1	1
Dia. Od fan	mm	1200	1200	1200
Oil cooling system		Air cooling	Air cooling	Air cooling
Oil filtering	ℓ	100	100	100
Air outlet temperature	°C	75~85	75~85	75~85
Air outlet size		3 inch 1ea	3 inch 1ea	3 inch 1ea
CRAWLER(Truck) ENGINE				
Model (Diesel engine)		R2v840	-	Daedong 34HP
Injection type		Indirect injection	-	Indirect injection
DisPlacement	cc	836	-	3907
Fuel tank capacity	ℓ	15	-	88
Fuel consumption	g/ps.h	22	-	154
Cooling system		Air cooling	-	Water cooling
Battery capacity	ah	100	-	100
Battery quantity	ea	1	-	2
CRAWLER BASE				
Crawler type		Solar 055	-	Solar 055
Crawler speed	km/h	2.5	-	2.5
Ground pressure	kg/cm ²	0.5	-	0.6
Ground clearance	mm	400	-	400
WHEEL TYPE				
Cardinality	ea	-	-	-
OPTION				
900CFM / 350PSI, 980CFM / 350PSI 1070CFM / 350PSI, 1150CFM / 350PSI *The truck is different according to the vehicle which the consumer wants. *The crawler engine is according to situation could be changed.				