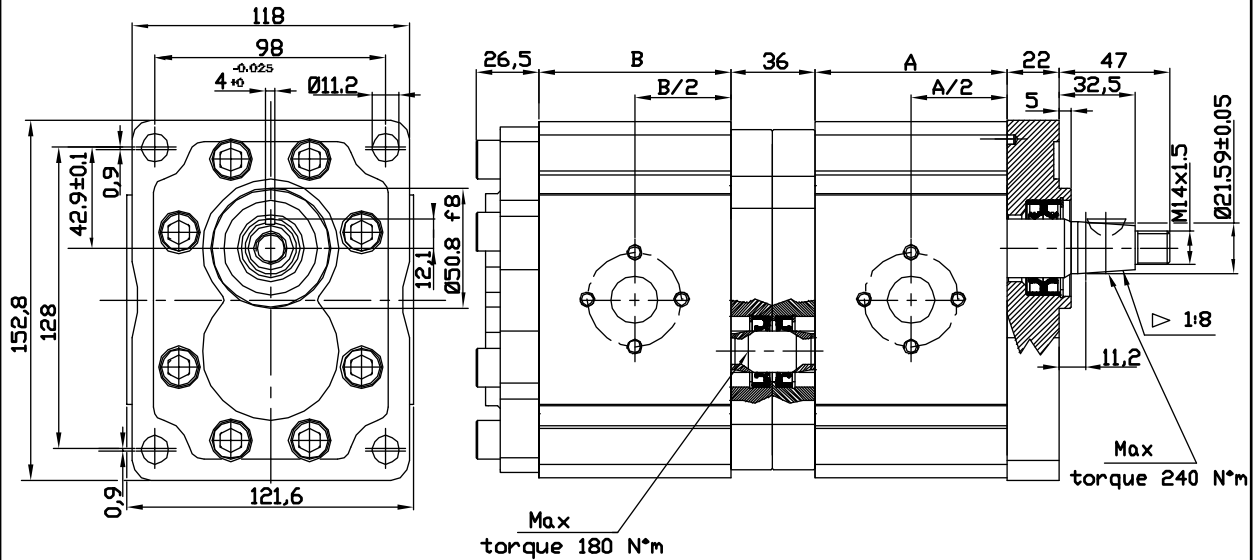


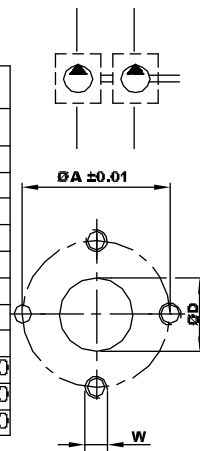
GROUP 3 PUMPS- TANDEM

VERSION: P38 P3



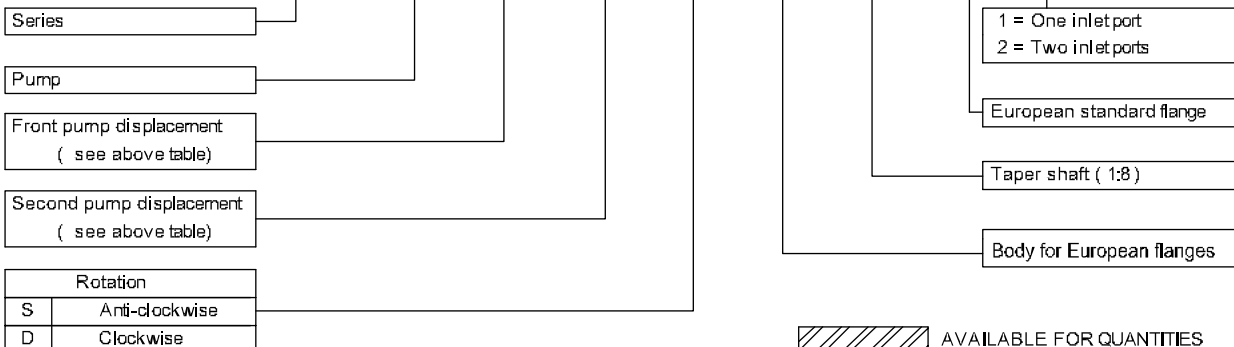
NOTE: The biggest displacement pump must be in the front position

Type	Displacement (cc/rev)	Max working pressure P1 (bar)	Peak pressure P3 (bar)	Max speed (r.p.m)	Dimension L M		Inlet port			Outlet port		
					(mm)	(mm)	ØD	ØA	W	ØD	ØA	W
OT 300 P22	22	260	300	3000	70,8	70,8	27	51	M10	19	40	M8
OT 300 P28	28	260	300	3000	75,4	75,4	27	51	M10	19	40	M8
OT 300 P32	32	260	300	3000	78,4	78,4	27	51	M10	19	40	M8
OT 300 P38	38	240	280	3000	83,0	83,0	27	51	M10	19	40	M8
OT 300 P42	42	240	280	3000	86,0	86,0	27	51	M10	19	40	M8
OT 300 P48	48	240	280	3000	100,6	100,6	27	51	M10	19	40	M8
OT 300 P53	53	220	250	3000	104,4	104,4	27	51	M10	19	40	M8
OT 300 P63	63	200	240	2100	112,0	112,0	27	51	M10	19	40	M8
OT 300 P73	73	180	210	2100	119,7	119,7	36	62	M12	27	51	M10
OT 300 P82	82	170	200	2100	126,6	126,6	36	62	M12	27	51	M10
OT 300 P90	90	150	180	2100	132,6	132,6	36	62	M12	27	51	M10



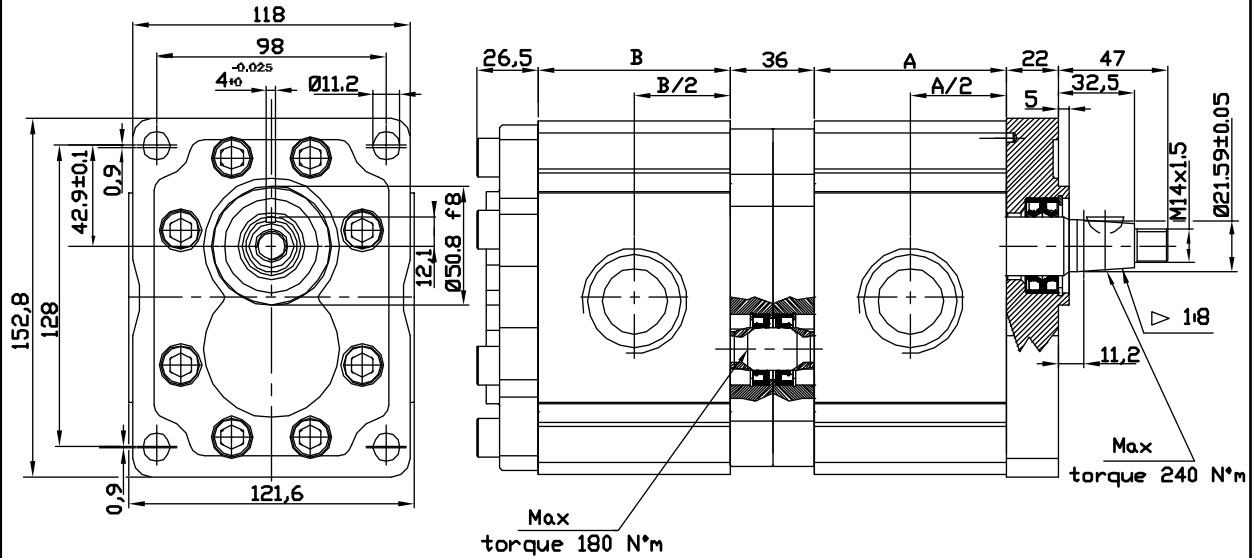
EXAMPLE OF ORDERING CODE

OT300 P 48 / 22 S / P 38 P3 / 2



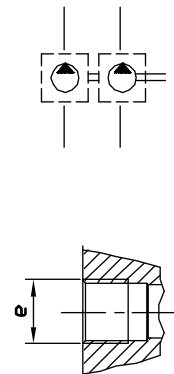
GROUP 3 PUMPS- TANDEM

VERSION: G38 P3



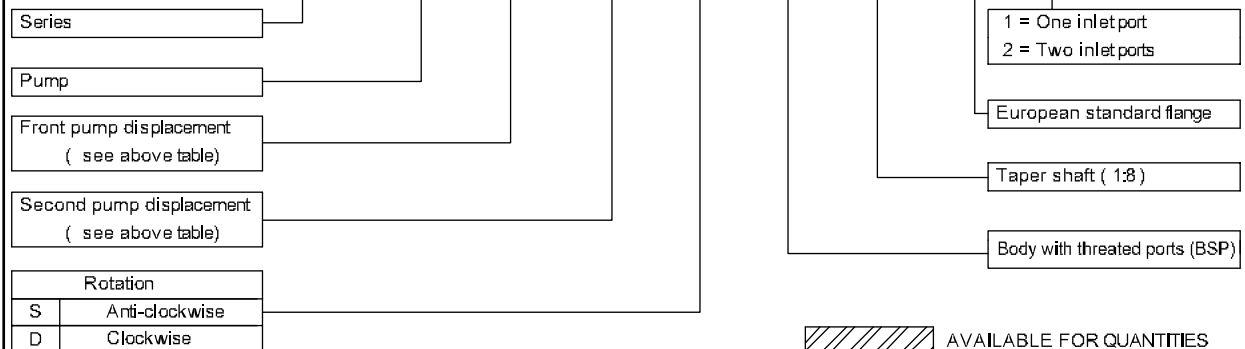
NOTE: The biggest displacement pump must be in the front position

Type	Displacement (cc/rev)	Max working pressure P1 (bar)	Peak pressure P3	Max speed (r.p.m)	Dimension L M		Inlet port e	Outlet port e
					(mm)	(mm)		
OT 300 P22	22	260	300	3000	70,8	70,8	G 1	G 3/4
OT 300 P28	28	260	300	3000	75,4	75,4	G 1	G 3/4
OT 300 P32	32	260	300	3000	78,4	78,4	G 1	G 3/4
OT 300 P38	38	240	280	3000	83,0	83,0	G 1	G 3/4
OT 300 P42	42	240	280	3000	86,0	86,0	G 1	G 3/4
OT 300 P48	48	240	280	3000	100,6	100,6	G 1	G 3/4
OT 300 P53	53	220	250	3000	104,4	104,4	G 1	G 3/4
OT 300 P63	63	200	240	2100	112,0	112,0	G 1+1/4	G 3/4
OT 300 P73	73	180	210	2100	119,7	119,7	G 1+1/4	G 1
OT 300 P82	82	170	200	2100	126,6	126,6	G 1+1/4	G 1
OT 300 P90	90	150	180	2100	132,6	132,6	G 1+1/4	G 1



EXAMPLE OF ORDERING CODE

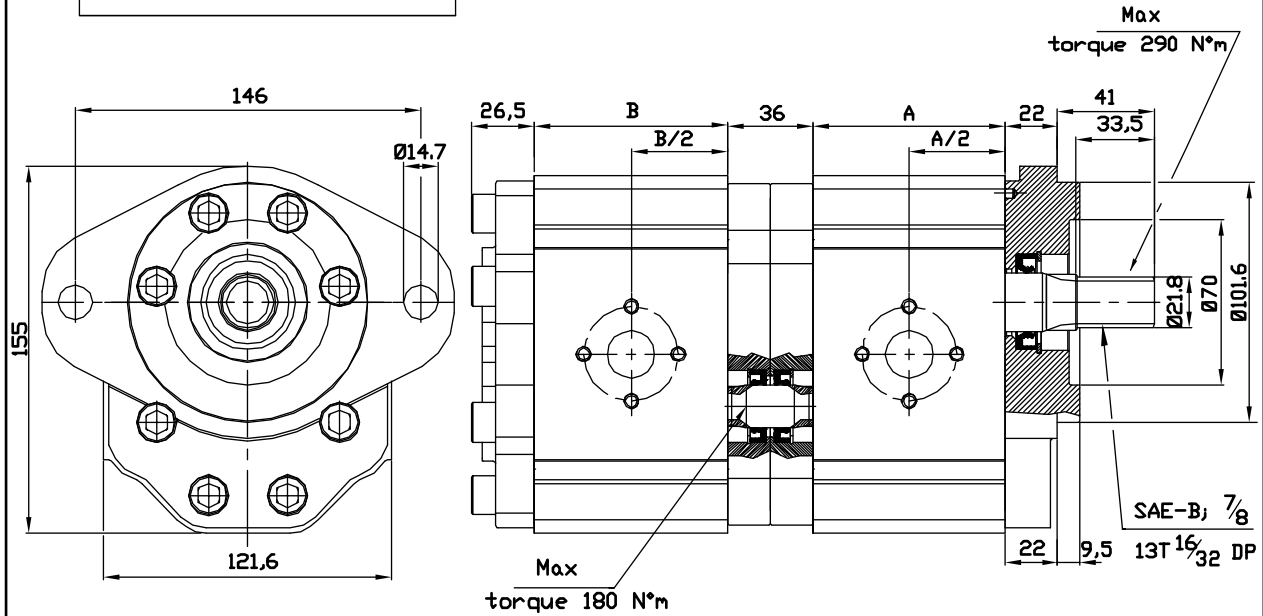
OT300 P 48 / 22 S / G 38 P3 / 2



AVAILABLE FOR QUANTITIES

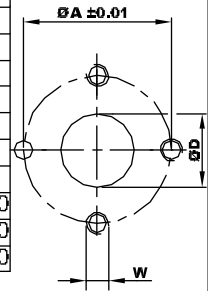
GROUP 3 PUMPS- TANDEM

VERSION: P33 S3



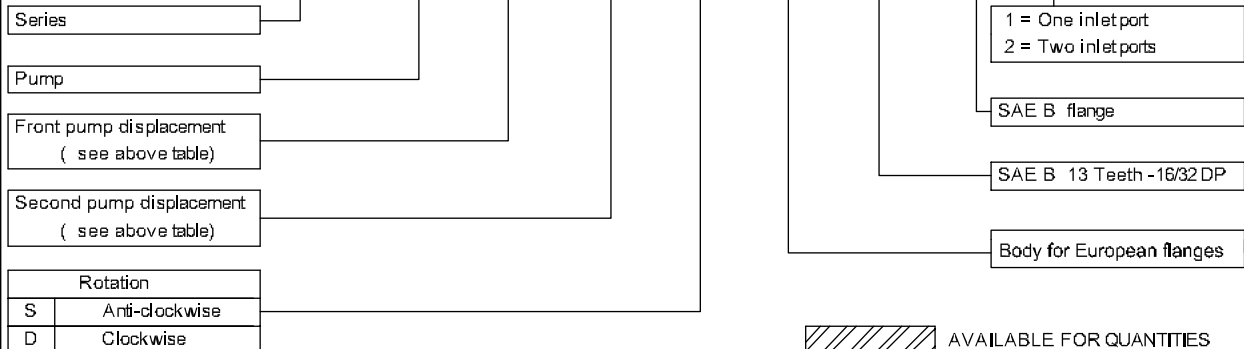
NOTE: The biggest displacement pump must be in the front position

Type	Displacement (cc/rev)	Max working pressure P1 (bar)	Peak pressure P3 (bar)	Max speed (r.p.m)	Dimension L M		Inlet port			Outlet port		
					(mm)		ØD	ØA	W	ØD	ØA	W
OT 300 P22	22	260	300	3000	70,8	70,8	27	51	M10	19	40	M8
OT 300 P28	28	260	300	3000	75,4	75,4	27	51	M10	19	40	M8
OT 300 P32	32	260	300	3000	78,4	78,4	27	51	M10	19	40	M8
OT 300 P38	38	240	280	3000	83,0	83,0	27	51	M10	19	40	M8
OT 300 P42	42	240	280	3000	86,0	86,0	27	51	M10	19	40	M8
OT 300 P48	48	240	280	3000	100,6	100,6	27	51	M10	19	40	M8
OT 300 P53	53	220	250	3000	104,4	104,4	27	51	M10	19	40	M8
OT 300 P63	63	200	240	2100	112,0	112,0	27	51	M10	19	40	M8
OT 300 P73	73	180	210	2100	119,7	119,7	36	62	M12	27	51	M10
OT 300 P82	82	170	200	2100	126,6	126,6	36	62	M12	27	51	M10
OT 300 P90	90	150	180	2100	132,6	132,6	36	62	M12	27	51	M10



EXAMPLE OF ORDERING CODE

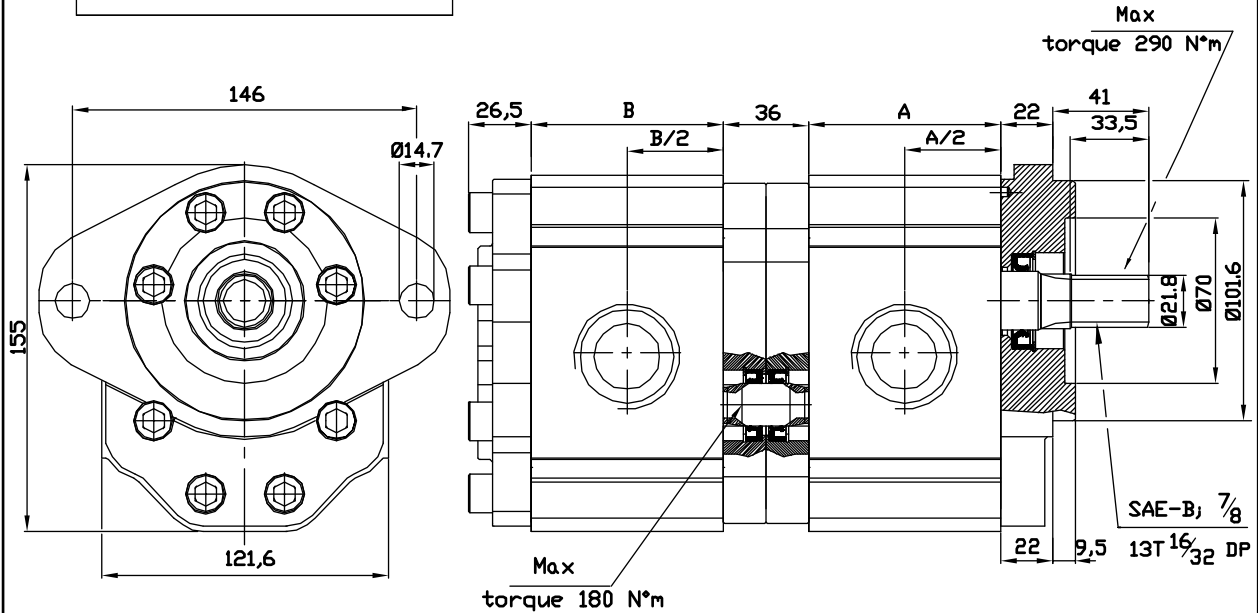
OT300 P 48 / 22 S / P 33 S3 / 2



AVAILABLE FOR QUANTITIES

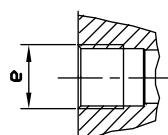
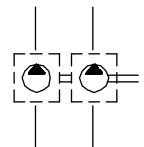
GROUP 3 PUMPS- TANDEM

VERSION: G33 S3



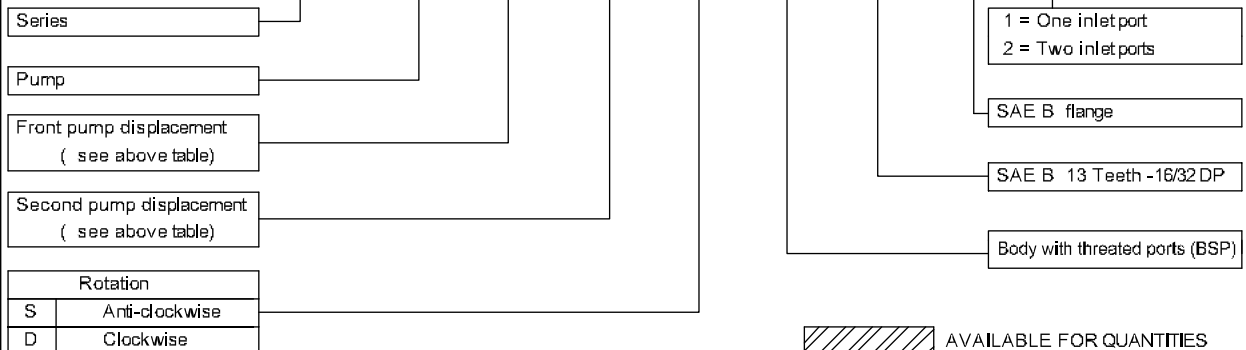
NOTE: The biggest displacement pump must be in the front position

Type	Displacement (cc/rev)	Max working pressure P1 (bar)	Peak pressure P3	Max speed (r.p.m)	Dimension (mm)		Inlet port e	Outlet port e
					L	M		
OT 300 P22	22	260	300	3000	70,8	70,8	G 1	G 3/4
OT 300 P28	28	260	300	3000	75,4	75,4	G 1	G 3/4
OT 300 P32	32	260	300	3000	78,4	78,4	G 1	G 3/4
OT 300 P38	38	240	280	3000	83,0	83,0	G 1	G 3/4
OT 300 P42	42	240	280	3000	86,0	86,0	G 1	G 3/4
OT 300 P48	48	240	280	3000	100,6	100,6	G 1	G 3/4
OT 300 P53	53	220	250	3000	104,4	104,4	G 1	G 3/4
OT 300 P63	63	200	240	2100	112,0	112,0	G 1+1/4	G 3/4
OT 300 P73	73	180	210	2100	119,7	119,7	G 1+1/4	G 1
OT 300 P82	82	170	200	2100	126,6	126,6	G 1+1/4	G 1
OT 300 P90	90	150	180	2100	132,6	132,6	G 1+1/4	G 1



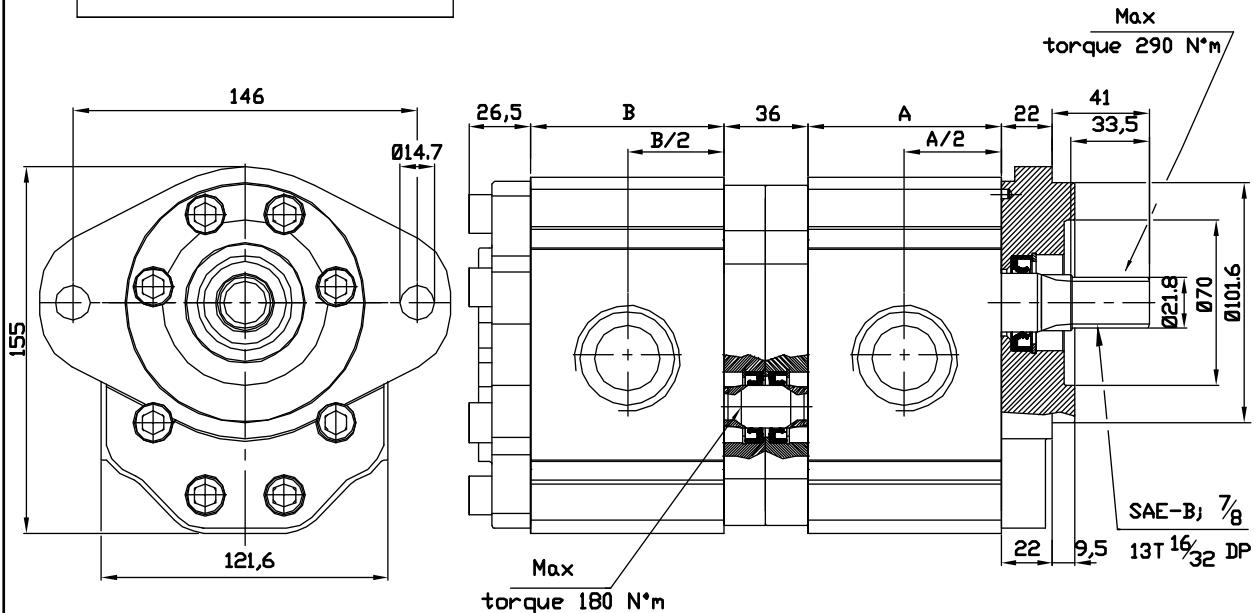
EXAMPLE OF ORDERING CODE

OT300 P 48 / 22 S / G 33 S3 / 2



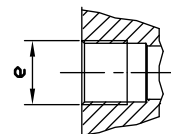
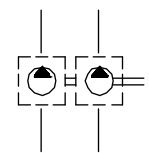
GROUP 3 PUMPS- TANDEM

VERSION: R33 S3



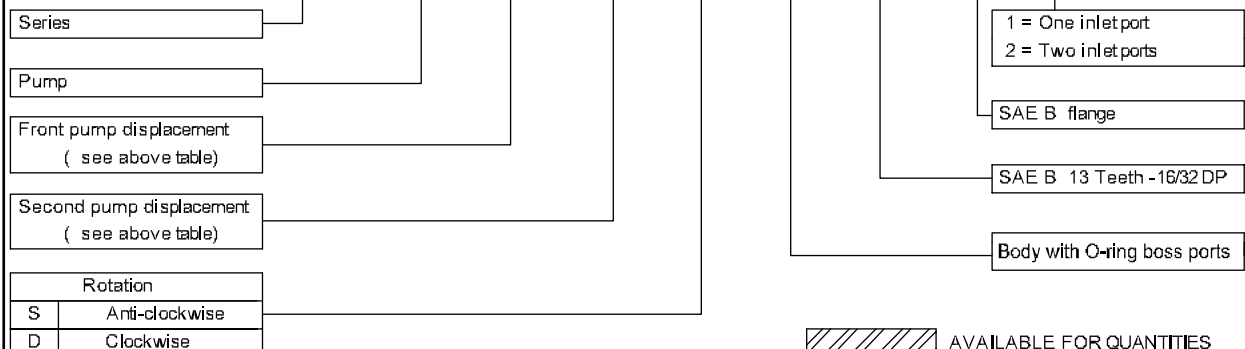
NOTE: The biggest displacement pump must be in the front position

Type	Displacement (cc/rev)	Max working pressure P1 (bar)	Peak pressure P3 (bar)	Max speed (r.p.m)	Dimension L M		Inlet port e	Outlet port e
					(mm)			
OT 300 P22	22	260	300	3000	70,8	70,8	1-5/16" UNF	1-1/16" UNF
OT 300 P28	28	260	300	3000	75,4	75,4	1-5/16" UNF	1-1/16" UNF
OT 300 P32	32	260	300	3000	78,4	78,4	1-5/16" UNF	1-1/16" UNF
OT 300 P38	38	240	280	3000	83,0	83,0	1-5/8" UNF	1-5/16" UNF
OT 300 P42	42	240	280	3000	86,0	86,0	1-5/8" UNF	1-5/16" UNF
OT 300 P48	48	240	280	3000	100,6	100,6	1-5/8" UNF	1-5/16" UNF
OT 300 P53	53	220	250	3000	104,4	104,4	1-5/8" UNF	1-5/16" UNF
OT 300 P63	63	200	240	2100	112,0	112,0	1-5/8" UNF	1-5/16" UNF
OT 300 P73	73	180	210	2100	119,7	119,7	1-7/8" UNF	1-5/8" UNF
OT 300 P82	82	170	200	2100	126,6	126,6	1-7/8" UNF	1-5/8" UNF
OT 300 P90	90	150	180	2100	132,6	132,6	1-7/8" UNF	1-5/8" UNF



EXAMPLE OF ORDERING CODE

OT300 P 48 / 22 S / R 33 S3 / 2



AVAILABLE FOR QUANTITIES

TANDEM PUMPS- OT300+OT200

VERSION: P38 P3

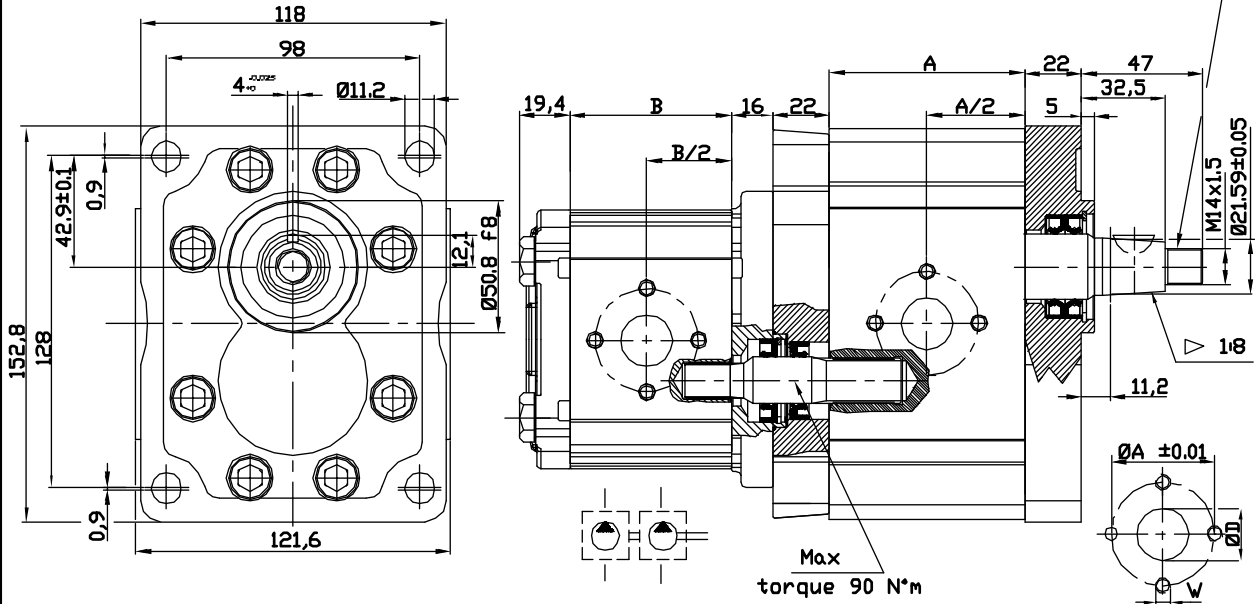


TABLE OT300

Type	Displacement (cc/rev)	Dim. A (mm)	Inlet port			Outlet port		
			ØD	ØA	W	ØD	ØA	W
OT 300 P22	22	70,8	27	51	M10	19	40	M8
OT 300 P28	28	75,4	27	51	M10	19	40	M8
OT 300 P32	32	78,4	27	51	M10	19	40	M8
OT 300 P38	38	83,0	27	51	M10	19	40	M8
OT 300 P42	42	86,0	27	51	M10	19	40	M8
OT 300 P48	48	100,6	27	51	M10	19	40	M8
OT 300 P53	53	104,4	27	51	M10	19	40	M8
OT 300 P63	63	112,0	27	51	M10	19	40	M8
OT 300 P73	73	119,7	36	62	M12	27	51	M10
OT 300 P82	82	126,6	36	62	M12	27	51	M10
OT 300 P90	90	132,6	36	62	M12	27	51	M10

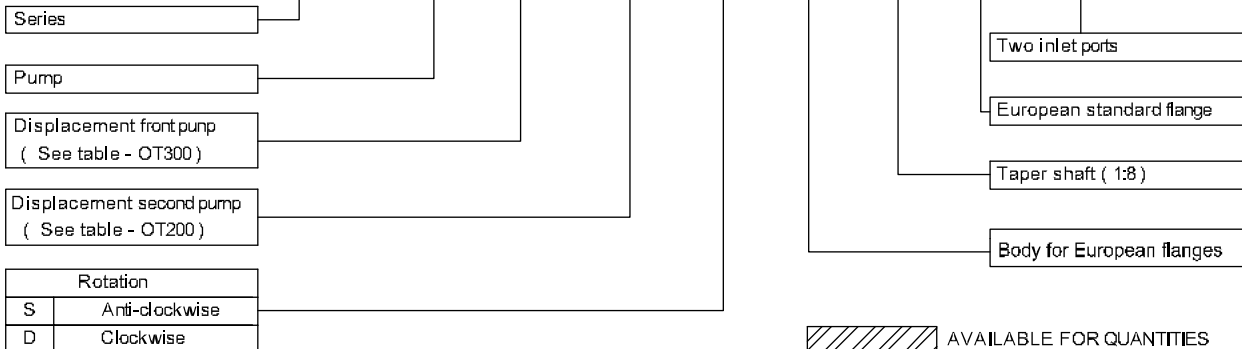
TABLE OT200

Type	Displacement (cc/rev)	Dim. B (mm)	Inlet port			Outlet port		
			ØD	ØA	W	ØD	ØA	W
OT 200 P04	04,10	48,00	13	30	M6	13	30	M6
OT 200 P06	06,20	51,00	13	30	M6	13	30	M6
OT 200 P08	08,20	54,00	13	30	M6	13	30	M6
OT 200 P11	11,20	58,30	13	30	M6	13	30	M6
OT 200 P14	14,00	62,30	20	40	M8	13	30	M6
OT 200 P16	16,00	65,20	20	40	M8	13	30	M6
OT 200 P20	20,00	71,00	20	40	M8	13	30	M6
OT 200 P22	22,50	82,70	20	40	M8	13	30	M6
OT 200 P25	25,10	86,50	20	40	M8	13	30	M6
OT 200 P28	28,00	90,70	20	40	M8	13	30	M6
OT 200 P30	30,00	93,50	20	40	M8	13	30	M6

NOTE: Define relative working and peak pressure consulting relative single pump table.

EXAMPLE OF ORDERING CODE

OT300/200 P 38 / 16 S / P 38 P3 / 2



TANDEM PUMPS- OT300+OT200

VERSION: G38 P3

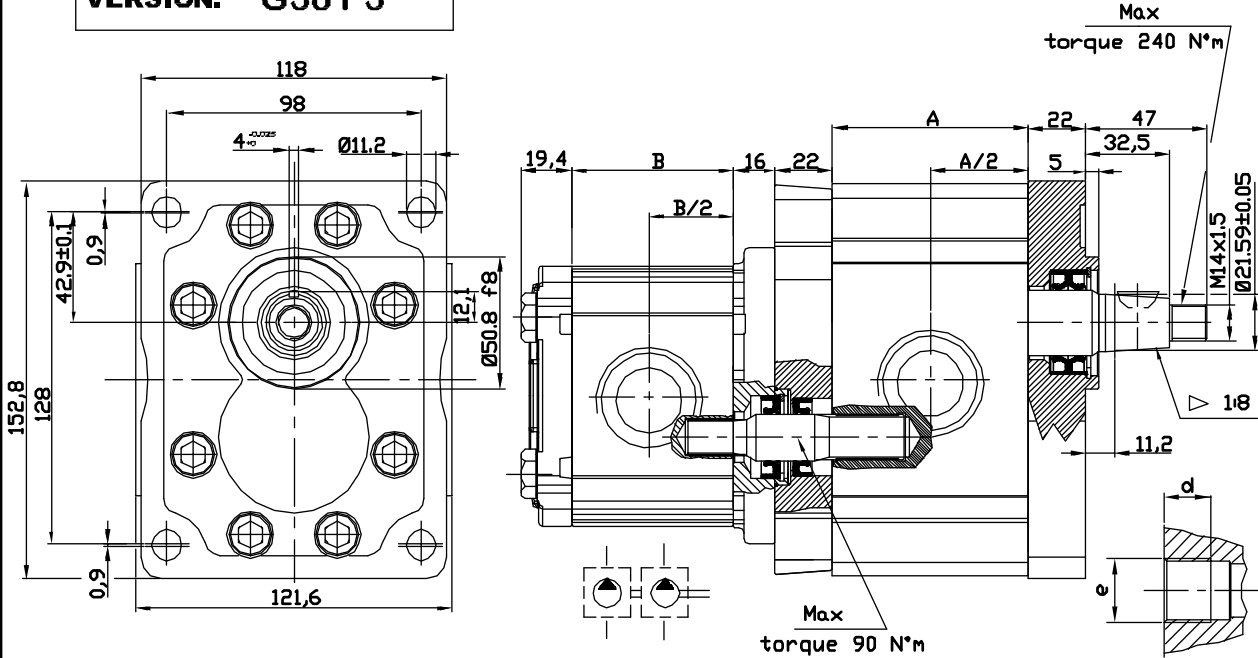


TABLE OT300

Type	Displacement (cc/rev)	Dim. A (mm)	Inlet port		Outlet port	
			e	e	e	e
OT 300 P22	22	70,8	G 1	G 3/4		
OT 300 P28	28	75,4	G 1	G 3/4		
OT 300 P32	32	78,4	G 1	G 3/4		
OT 300 P38	38	83,0	G 1	G 3/4		
OT 300 P42	42	86,0	G 1	G 3/4		
OT 300 P48	48	100,6	G 1	G 3/4		
OT 300 P53	53	104,4	G 1	G 3/4		
OT 300 P63	63	112,0	G 1+1/4	G 3/4		
OT 300 P73	73	119,7	G 1+1/4	G 1		
OT 300 P82	82	126,6	G 1+1/4	G 1		
OT 300 P90	90	132,6	G 1+1/4	G 1		

TABLE OT200

Type	Displacement (cc/rev)	Dim. B (mm)	Inlet port		Outlet port	
			e	d	e	d
OT 200 P04	04,10	48,00	G1/2	14	G1/2	14
OT 200 P06	06,20	51,00	G1/2	14	G1/2	14
OT 200 P08	08,20	54,00	G1/2	14	G1/2	14
OT 200 P11	11,20	58,30	G1/2	14	G1/2	14
OT 200 P14	14,00	62,30	G3/4	16	G1/2	14
OT 200 P16	16,00	65,20	G3/4	16	G1/2	14
OT 200 P20	20,00	71,00	G3/4	16	G1/2	14
OT 200 P22	22,50	82,70	G3/4	16	G1/2	14
OT 200 P25	25,10	86,50	G3/4	16	G1/2	14
OT 200 P28	28,00	90,70	G3/4	16	G1/2	14
OT 200 P30	30,00	93,50	G3/4	16	G1/2	14

NOTE: Define relative working and peak pressure consulting relative single pump table.

EXAMPLE OF ORDERING CODE

OT300/200 P 38 / 16 S / G 38 P3 / 2

Series

Pump

Displacement front pump
(See table - OT300)

Displacement second pump
(See table - OT200)

Rotation

S Anti-clockwise

D Clockwise

Two inlet ports

European standard flange

Taper shaft (1:8)

Body with threaded ports (BSP)

AVAILABLE FOR QUANTITIES

TANDEM PUMPS- OT300+OT200

VERSION: P33 S3

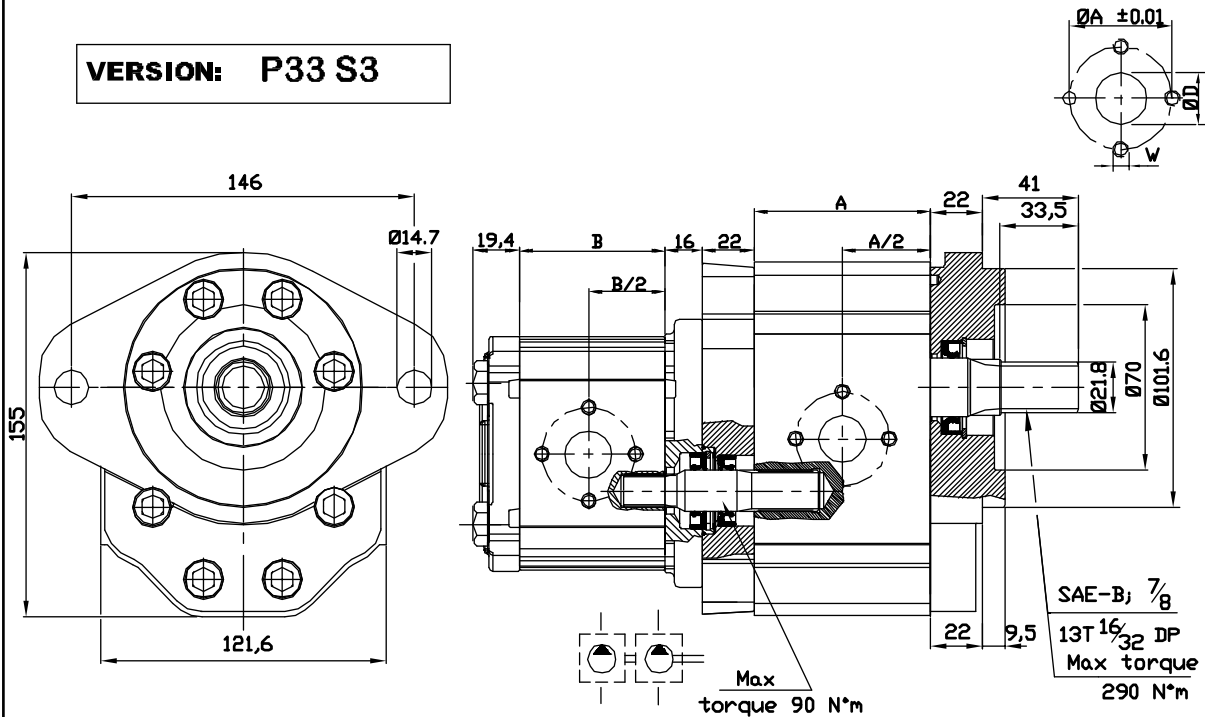


TABLE OT300

Type	Displacement (cc/rev)	Dim. A (mm)	Inlet port			Outlet port		
			ØD	ØA	W	ØD	ØA	W
OT 300 P22	22	70,8	27	51	M10	19	40	M8
OT 300 P28	28	75,4	27	51	M10	19	40	M8
OT 300 P32	32	78,4	27	51	M10	19	40	M8
OT 300 P38	38	83,0	27	51	M10	19	40	M8
OT 300 P42	42	86,0	27	51	M10	19	40	M8
OT 300 P48	48	100,6	27	51	M10	19	40	M8
OT 300 P53	53	104,4	27	51	M10	19	40	M8
OT 300 P63	63	112,0	27	51	M10	19	40	M8
OT 300 P73	73	119,7	36	62	M12	27	51	M10
OT 300 P82	82	126,6	36	62	M12	27	51	M10
OT 300 P90	90	132,6	36	62	M12	27	51	M10

TABLE OT200

Type	Displacement (cc/rev)	Dim. B (mm)	Inlet port			Outlet port		
			ØD	ØA	W	ØD	ØA	W
OT 200 P04	04,10	48,00	13	30	M6	13	30	M6
OT 200 P06	06,20	51,00	13	30	M6	13	30	M6
OT 200 P08	08,20	54,00	13	30	M6	13	30	M6
OT 200 P11	11,20	58,30	13	30	M6	13	30	M6
OT 200 P14	14,00	62,30	20	40	M8	13	30	M6
OT 200 P16	16,00	65,20	20	40	M8	13	30	M6
OT 200 P20	20,00	71,00	20	40	M8	13	30	M6
OT 200 P22	22,50	82,70	20	40	M8	13	30	M6
OT 200 P25	25,10	86,50	20	40	M8	13	30	M6
OT 200 P28	28,00	90,70	20	40	M8	13	30	M6
OT 200 P30	30,00	93,50	20	40	M8	13	30	M6

NOTE: Define relative working and peak pressure consulting relative single pump table.

EXAMPLE OF ORDERING CODE

OT300/200 P 38 / 16 S / P 33 S3 / 2

Series

Pump

Displacement front pump
(See table - OT300)

Displacement second pump
(See table - OT200)

Rotation

S Anti-clockwise
D Clockwise

Two inlet ports

SAE B flange

SAE B 13 Teeth -16/32 DP

Body for European flanges

AVAILABLE FOR QUANTITIES

TANDEM PUMPS- OT300+OT200

VERSION: G33 S3

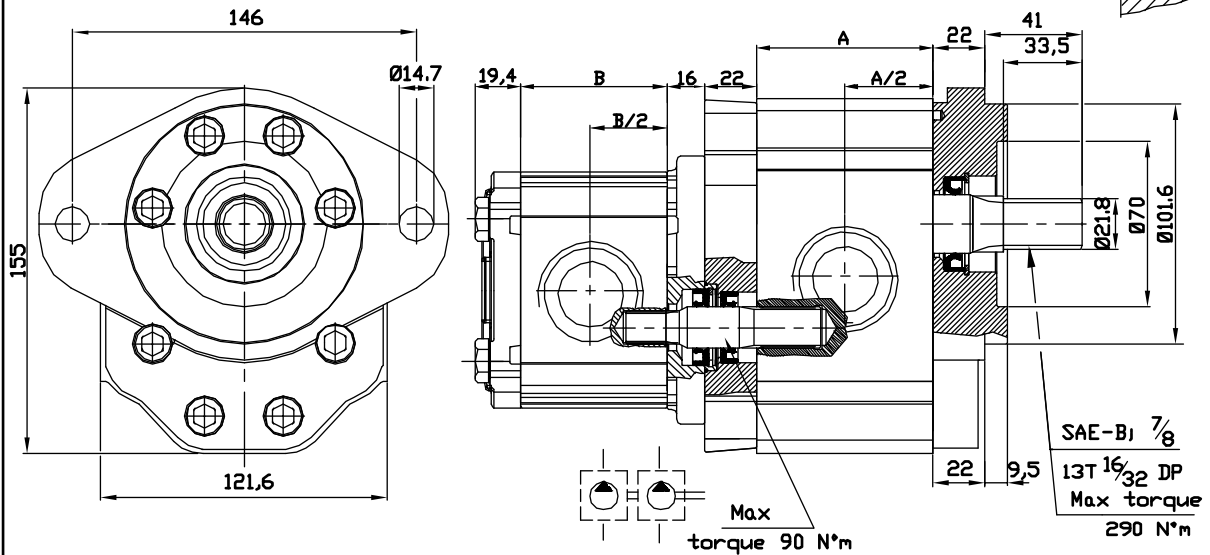


TABLE OT300

Type	Displacement (cc/rev)	Dim. A (mm)	Inlet port		Outlet port	
			e	e	e	e
OT 300 P22	22	70,8	G 1	G 3/4		
OT 300 P28	28	75,4	G 1	G 3/4		
OT 300 P32	32	78,4	G 1	G 3/4		
OT 300 P38	38	83,0	G 1	G 3/4		
OT 300 P42	42	86,0	G 1	G 3/4		
OT 300 P48	48	100,6	G 1	G 3/4		
OT 300 P53	53	104,4	G 1	G 3/4		
OT 300 P63	63	112,0	G 1+1/4	G 3/4		
OT 300 P73	73	119,7	G 1+1/4	G 1		
OT 300 P82	82	126,6	G 1+1/4	G 1		
OT 300 P90	90	132,6	G 1+1/4	G 1		

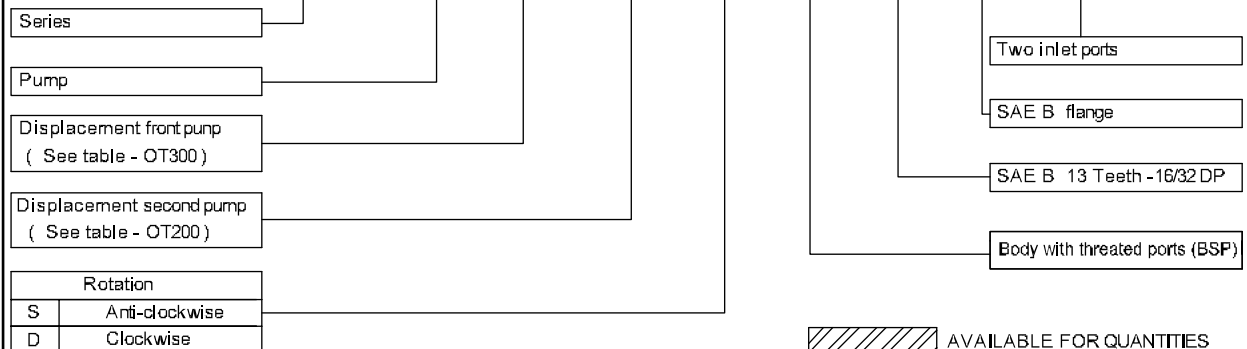
TABLE OT200

Type	Displacement (cc/rev)	Dim. B (mm)	Inlet port		Outlet port	
			e	d	e	d
OT 200 P04	04,10	48,00	G1/2	14	G1/2	14
OT 200 P06	06,20	51,00	G1/2	14	G1/2	14
OT 200 P08	08,20	54,00	G1/2	14	G1/2	14
OT 200 P11	11,20	58,30	G1/2	14	G1/2	14
OT 200 P14	14,00	62,30	G3/4	16	G1/2	14
OT 200 P16	16,00	65,20	G3/4	16	G1/2	14
OT 200 P20	20,00	71,00	G3/4	16	G1/2	14
OT 200 P22	22,50	82,70	G3/4	16	G1/2	14
OT 200 P25	25,10	86,50	G3/4	16	G1/2	14
OT 200 P28	28,00	90,70	G3/4	16	G1/2	14
OT 200 P30	30,00	93,50	G3/4	16	G1/2	14

NOTE: Define relative working and peak pressure consulting relative single pump table.

EXAMPLE OF ORDERING CODE

OT300/200 P 38 / 16 S / G 33 S3 / 2



TANDEM PUMPS- OT300+OT200

VERSION: R33 S3

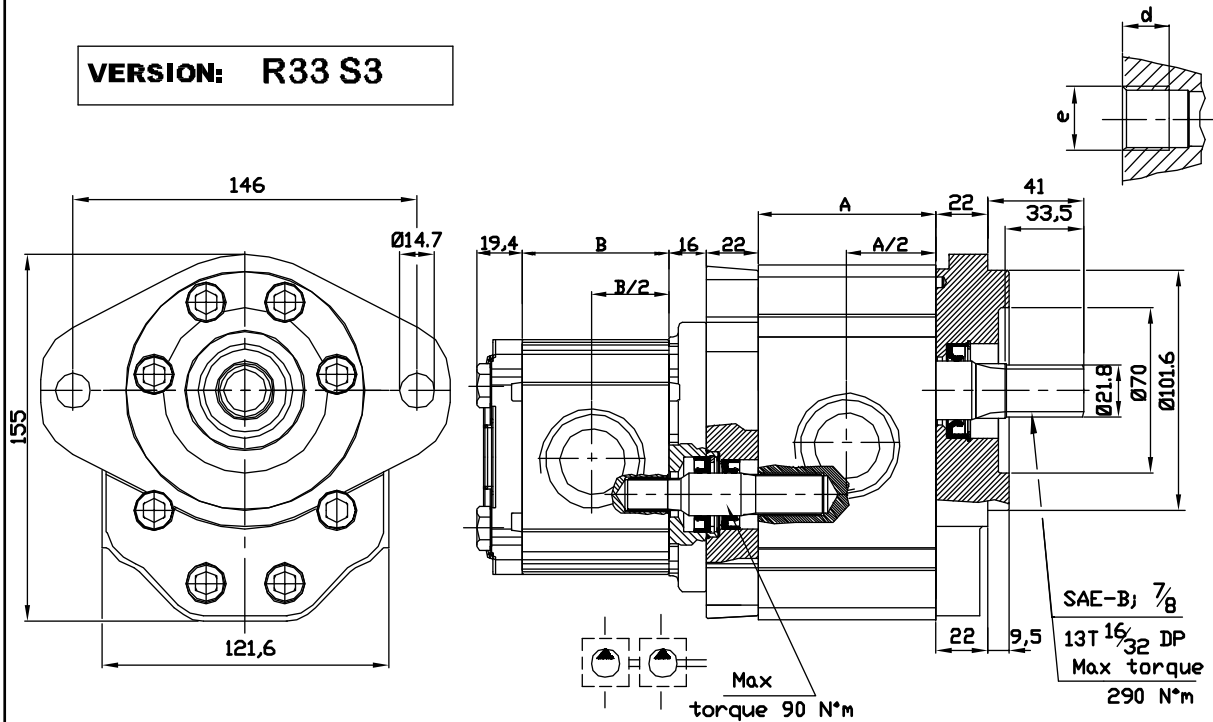


TABLE OT300

Type	Displacement (cc/rev)	Dim. A (mm)	Inlet port		Outlet port	
			e	e	e	e
OT 300 P22	22	70,8	1-5/16" UNF	1-1/16" UNF	1-1/16" UNF	1-1/16" UNF
OT 300 P28	28	75,4	1-5/16" UNF	1-1/16" UNF	1-1/16" UNF	1-1/16" UNF
OT 300 P32	32	78,4	1-5/16" UNF	1-1/16" UNF	1-1/16" UNF	1-1/16" UNF
OT 300 P38	38	83,0	1-5/8" UNF	1-5/16" UNF	1-5/16" UNF	1-5/16" UNF
OT 300 P42	42	86,0	1-5/8" UNF	1-5/16" UNF	1-5/16" UNF	1-5/16" UNF
OT 300 P48	48	100,6	1-5/8" UNF	1-5/16" UNF	1-5/16" UNF	1-5/16" UNF
OT 300 P53	53	104,4	1-5/8" UNF	1-5/16" UNF	1-5/16" UNF	1-5/16" UNF
OT 300 P63	63	112,0	1-5/8" UNF	1-5/16" UNF	1-5/16" UNF	1-5/16" UNF
OT 300 P73	73	119,7	1-7/8" UNF	1-5/8" UNF	1-5/8" UNF	1-5/8" UNF
OT 300 P82	82	126,6	1-7/8" UNF	1-5/8" UNF	1-5/8" UNF	1-5/8" UNF
OT 300 P90	90	132,6	1-7/8" UNF	1-5/8" UNF	1-5/8" UNF	1-5/8" UNF

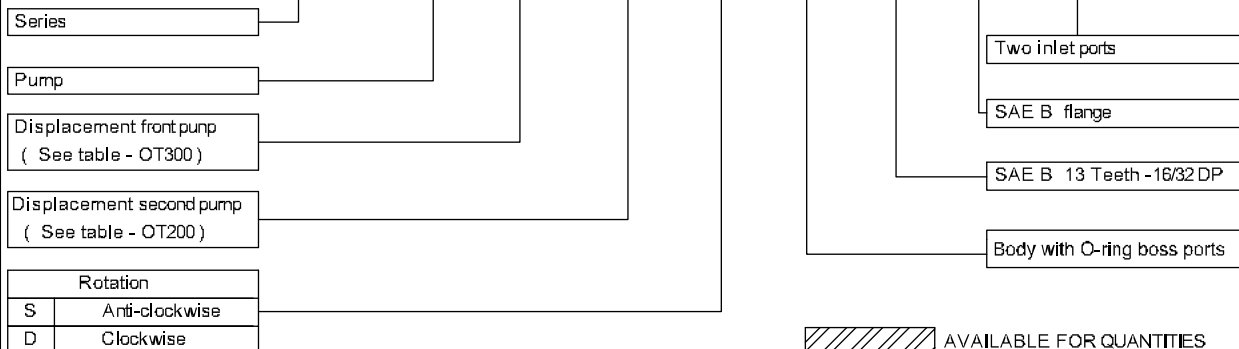
TABLE OT200

Type	Displacement (cc/rev)	Dim. B (mm)	Inlet port		Outlet port	
			e	e	e	e
OT 200 P04	04,10	48,00	7/8-14UNF	7/8-14UNF	7/8-14UNF	7/8-14UNF
OT 200 P06	06,20	51,00	7/8-14UNF	7/8-14UNF	7/8-14UNF	7/8-14UNF
OT 200 P08	08,20	54,00	7/8-14UNF	7/8-14UNF	7/8-14UNF	7/8-14UNF
OT 200 P11	11,20	58,30	7/8-14UNF	7/8-14UNF	7/8-14UNF	7/8-14UNF
OT 200 P14	14,00	62,30	1-1/16" UNF	1-1/16" UNF	1-1/16" UNF	1-1/16" UNF
OT 200 P16	16,00	65,20	1-1/16" UNF	1-1/16" UNF	1-1/16" UNF	1-1/16" UNF
OT 200 P20	20,00	71,00	1-1/16" UNF	1-1/16" UNF	7/8-14UNF	7/8-14UNF
OT 200 P22	22,50	82,70	1-1/16" UNF	1-1/16" UNF	7/8-14UNF	7/8-14UNF
OT 200 P25	25,10	86,50	1-1/16" UNF	1-1/16" UNF	7/8-14UNF	7/8-14UNF
OT 200 P28	28,00	90,70	1-1/16" UNF	1-1/16" UNF	7/8-14UNF	7/8-14UNF
OT 200 P30	30,00	93,50	1-1/16" UNF	1-1/16" UNF	7/8-14UNF	7/8-14UNF

NOTE: Define relative working and peak pressure consulting relative single pump table.

EXAMPLE OF ORDERING CODE

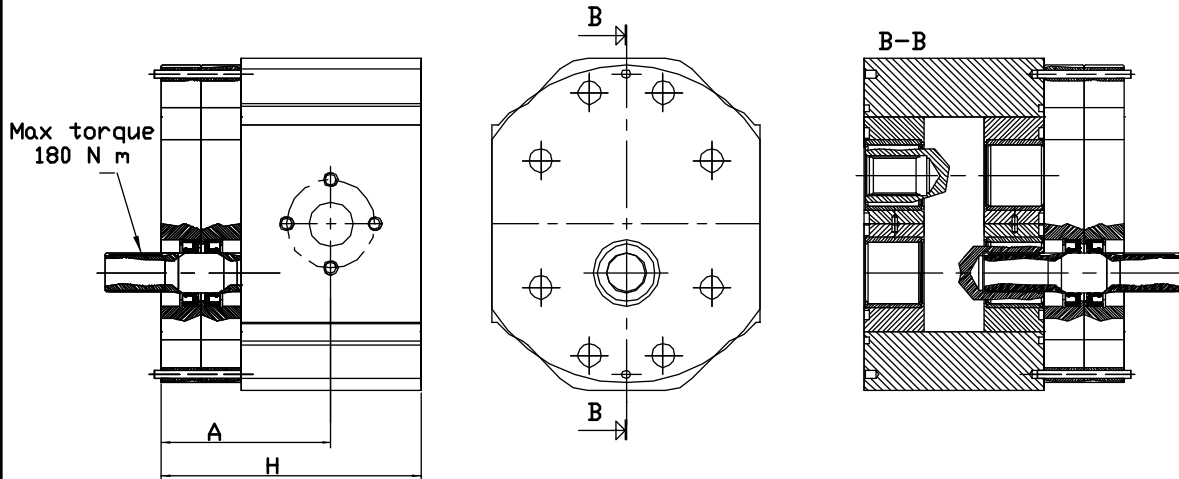
OT300/200 P 38 / 16 S / R 33 S3 / 2



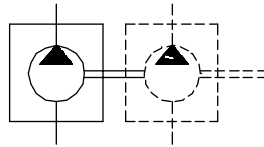
AVAILABLE FOR QUANTITIES

INTERMEDIATE GROUP 3 PUMPS FOR TANDEM UNITS

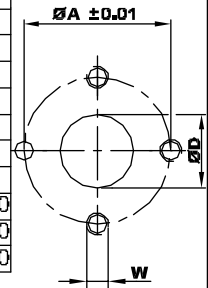
VERSION: P X X INTERMEDIATE



NOTE : Screw tightening torque 48 N·m

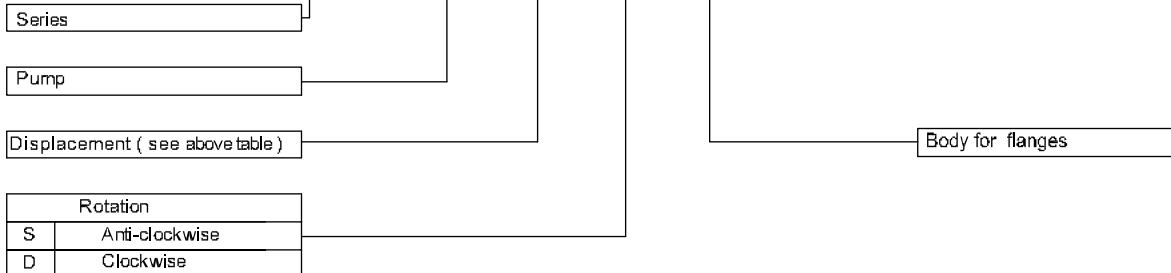


Type	Displacement (cc/rev)	Max working pressure P1 (bar)	Peak pressure P3 (bar)	Max speed (r.p.m)	Dimension		Inlet port		Outlet port			
					A	H	e	e				
OT 300 P22	22	260	300	3000	71.4	106.8	27	51	M10	19	40	M8
OT 300 P28	28	260	300	3000	73.7	111.4	27	51	M10	19	40	M8
OT 300 P32	32	260	300	3000	75.2	114.4	27	51	M10	19	40	M8
OT 300 P38	38	240	280	3000	77.5	119.0	27	51	M10	19	40	M8
OT 300 P42	42	240	280	3000	79.0	122.0	27	51	M10	19	40	M8
OT 300 P48	48	240	280	3000	86.3	136.6	27	51	M10	19	40	M8
OT 300 P53	53	220	250	3000	88.2	140.4	27	51	M10	19	40	M8
OT 300 P63	63	200	240	2100	92.0	148.0	27	51	M10	19	40	M8
OT 300 P73	73	180	210	2100	95.9	155.7	36	62	M12	27	51	M10
OT 300 P82	82	170	200	2100	99.3	162.6	36	62	M12	27	51	M10
OT 300 P90	90	150	180	2100	102.3	168.6	36	62	M12	27	51	M10



EXAMPLE OF ORDERING CODE

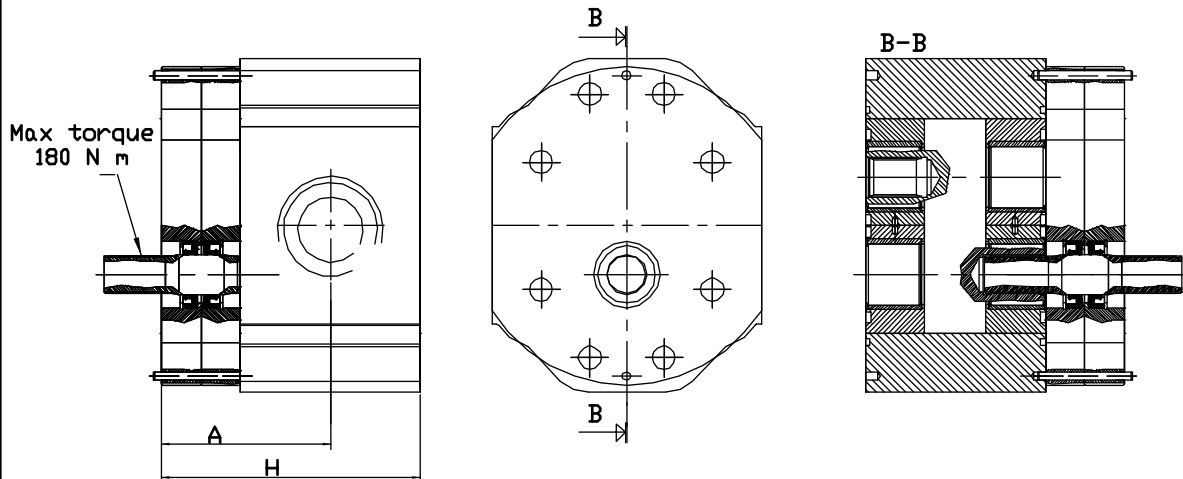
OT300 P 22 S / P X X INTERMEDIATE



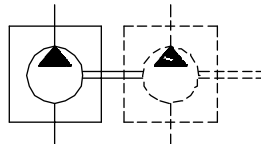
AVAILABLE FOR QUANTITIES

INTERMEDIATE GROUP 3 PUMPS FOR TANDEM UNITS

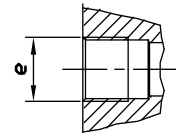
VERSION: P X X INTERMEDIATE



NOTE : Screw tightening torque 48-N m



Type	Displacement (cc/rev)	Max working pressure P1 (bar)	Peak pressure P3	Max speed (r.p.m)	Dimension (mm)		Inlet port e	Outlet port e
					L	M		
OT 300 P22	22	260	300	3000	71.4	106.8	G 1	G 3/4
OT 300 P26	28	260	300	3000	73.7	111.4	G 1	G 3/4
OT 300 P32	32	260	300	3000	75.2	114.4	G 1	G 3/4
OT 300 P38	38	240	280	3000	77.5	119.0	G 1	G 3/4
OT 300 P42	42	240	280	3000	79.0	122.0	G 1	G 3/4
OT 300 P48	48	240	280	3000	86.3	136.6	G 1	G 3/4
OT 300 P53	53	220	250	3000	88.2	140.4	G 1	G 3/4
OT 300 P63	63	200	240	2100	92.0	148.0	G 1+1/4	G 3/4
OT 300 P73	73	180	210	2100	95.9	155.7	G 1+1/4	G 1
OT 300 P82	82	170	200	2100	99.3	162.6	G 1+1/4	G 1
OT 300 P90	90	150	180	2100	102.3	168.6	G 1+1/4	G 1



EXAMPLE OF ORDERING CODE

OT300 P 22 S / P X X INTERMEDIATE

Series

Pump

Displacement (see above table)

Rotation

S Anti-clockwise

D Clockwise

Body with threaded ports (BSP)

AVAILABLE FOR QUANTITIES